

# NEW

## BILATEC MOLECULAR WEIGHT MARKERS

### BILATEC Molecular Weight Marker-1 (MWM-1):

#### Product Description

BILATEC MWM-1 contains 14 regularly-spaced bands, ranging from 200 to 10,000bp. The 1,000 and 10,000bp bands have the highest intensity, to allow easy identification. As each band contains an exact amount of dsDNA, it is possible to achieve accurate quantification of sample bands.

#### Features

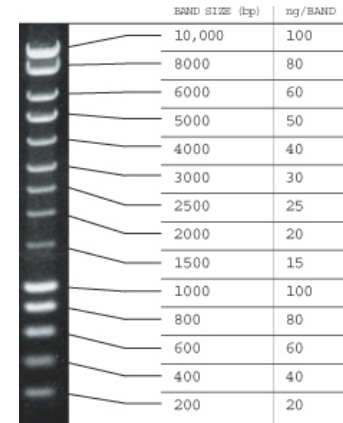
- Each band represents an exact amount of dsDNA
- Supplied in ready-to-use form, 5µl per lane (720ng of DNA)
- Supplied with a 5x sample loading buffer

#### Applications

- Provides quantification of dsDNA on gels

#### Ordering

- BILATEC MWM-1 (200 lanes) Cat.No. 120101 Netto-Price 70,- €
- BILATEC MWM-1 (500 lanes) Cat.No. 120102 Netto-Price 142,- €



### BILATEC Molecular Weight Marker-2 (MWM-2):

#### Product Description

BILATEC MWM-2 contains 15 regularly-spaced bands, ranging from 50bp to 2kb. The 300bp, 1kb, and 2kb bands have highest intensity, to allow easy identification. As each band contains an exact amount of dsDNA, it is possible to achieve accurate quantification of sample bands.

#### Features

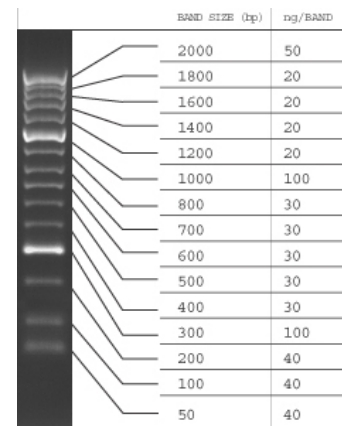
- Each band represents an exact amount of dsDNA
- Supplied in ready-to-use form, 5µl per lane (600ng of DNA)
- Supplied with a 5x sample loading buffer

#### Applications

- Provides quantification of dsDNA on gels

#### Ordering

- BILATEC MWM-2 (200 lanes) Cat.No. 120201 Netto-Price 132,- €
- BILATEC MWM-2 (500 lanes) Cat.No. 120202 Netto-Price 298,- €



### BILATEC Molecular Weight Marker-4 (MWM-4):

#### Product Description

BILATEC MWM-4 contains 9 regularly-spaced bands, ranging from 100 to 1,000bp.

Each band is an exact multiple of 100bp. As each band contains an exact amount of dsDNA, it is possible to achieve accurate quantification of sample bands.

#### Features

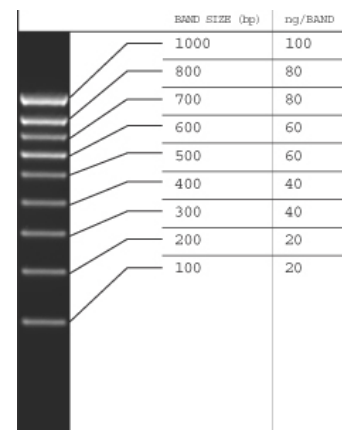
- Each band represents an exact amount of dsDNA
- Supplied in ready-to-use form, 5µl per lane (500ng of DNA)
- Supplied with a 5x sample loading buffer

#### Applications

- Provides quantification of dsDNA on gels

#### Ordering

- BILATEC MWM-4 (200 lanes) Cat.No. 120401 Netto-Price 132,- €
- BILATEC MWM-4 (500 lanes) Cat.No. 120402 Netto-Price 298,- €



## BILATEC Molecular Weight Marker-5 (MWM-5):

### Product Description

BILATEC MWM-5 contains 12 regularly-spaced bands, ranging from 25 to 500bp. The 100 and 200bp bands have the highest intensity, to allow easy identification. As each band contains an exact amount of dsDNA, it is possible to achieve accurate quantification of sample bands.

### Features

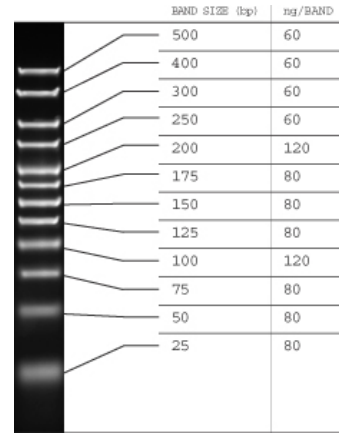
- Each band represents an exact amount of dsDNA
- Supplied in ready-to-use form, 5µl per lane (960ng of DNA)
- Supplied with a 5x sample loading buffer

### Applications

- Provides quantification of dsDNA on gels

### Ordering

- BILATEC MWM-5 (200 lanes) Cat.No. 120501 Netto-Price 140,- €
- BILATEC MWM-5 (500 lanes) Cat.No. 120502 Netto-Price 314,- €



## BILATEC Molecular Weight Marker-6 (MWM-6):

### Product Description

BILATEC MWM-6 contains 10 bands, ranging from 10,090 to 48,500bp. As each band contains an exact amount of dsDNA, it is possible to achieve accurate quantification of sample bands. Pulse Field Inversion Electrophoresis is recommended for superior resolution of fragments from 29,950bp to 48,500bp. HyperLadder VI also contains an additional corresponding band at 1.5kb.

### Features

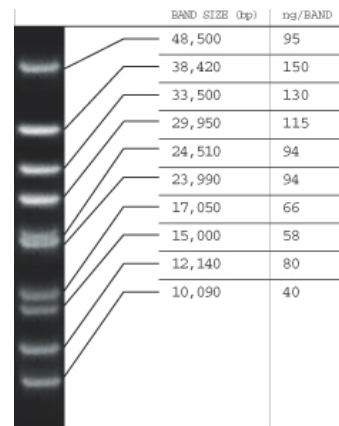
- Each band represents an exact amount of dsDNA
- Supplied in ready-to-use form, 10µl per lane (830ng of DNA)
- Supplied with a 5x sample loading buffer

### Applications

- Provides quantification of dsDNA on gels

### Ordering

- BILATEC MWM-6 (200 lanes) Cat.No. 120601 Netto-Price 140,- €
- BILATEC MWM-6 (500 lanes) Cat.No. 120602 Netto-Price 314,- €



**Please send FAX ORDER to: + 49 (0)621 - 309 789 - 10**

quantity	cat. no.	item	price in €	total in €
	<b>120101</b>	BILATEC MWM-1 (200 lanes)	<b>70,-</b>	
	<b>120102</b>	BILATEC MWM-1 (500 lanes)	<b>142,-</b>	
	<b>120201</b>	BILATEC MWM-2 (200 lanes)	<b>132,-</b>	
	<b>120202</b>	BILATEC MWM-2 (500 lanes)	<b>298,-</b>	
	<b>120401</b>	BILATEC MWM-4 (200 lanes)	<b>132,-</b>	
	<b>120402</b>	BILATEC MWM-4 (500 lanes)	<b>298,-</b>	
	<b>120501</b>	BILATEC MWM-5 (200 lanes)	<b>140,-</b>	
	<b>120502</b>	BILATEC MWM-5 (500 lanes)	<b>314,-</b>	
	<b>120601</b>	BILATEC MWM-6 (200 lanes)	<b>140,-</b>	
	<b>120602</b>	BILATEC MWM-6 (500 lanes)	<b>314,-</b>	
<b>TOTAL (netto)</b>				

Date: \_\_\_\_\_

Signature: \_\_\_\_\_

**Shipping: + + + + + Your first order is free of charge + + + + + you do not have to pay for shipping**

Shipping 10,- Euro for orders under 250,- Euro value of ordered goods inland Germany

Shipping 20,- Euro for orders under 250,- Euro value of ordered goods outside Germany

Shipping is included for orders exceeding 250,- Euro value of ordered goods inland and outside Germany

Order address:

Delivery address:

