

# MOLECULAR WEIGHT MARKERS

## Bilatest Molecular Weight Marker-1 (MWM-1):

### Product Description

BILATEC MWM-1 contains 14 regularly-spaced bands, ranging from 200 to 10,000bp. The 1,000 and 10,000bp bands have the highest intensity, to allow easy identification. As each band contains an exact amount of dsDNA, it is possible to achieve accurate quantification of sample bands.

### Features

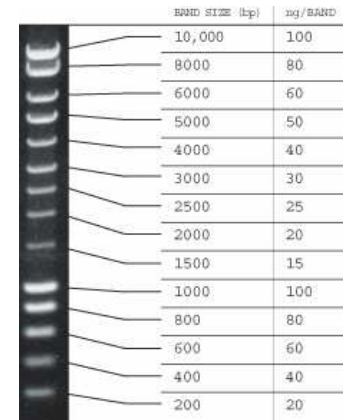
- Each band represents an exact amount of dsDNA
- Supplied in ready-to-use form, 5µl per lane (720ng of DNA)
- Supplied with a 5x sample loading buffer

### Applications

- Provides quantification of dsDNA on gels

### Ordering

- BILATEC MWM-1 (200 lanes) Cat.No. 120101
- BILATEC MWM-1 (500 lanes) Cat.No. 120102



## Bilatest Molecular Weight Marker-2 (MWM-2):

### Product Description

BILATEC MWM-2 contains 15 regularly-spaced bands, ranging from 50bp to 2kb. The 300bp, 1kb, and 2kb bands have highest intensity, to allow easy identification. As each band contains an exact amount of dsDNA, it is possible to achieve accurate quantification of sample bands.

### Features

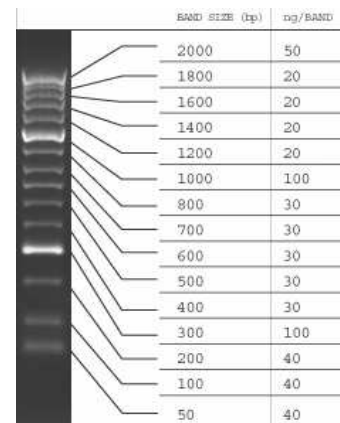
- Each band represents an exact amount of dsDNA
- Supplied in ready-to-use form, 5µl per lane (600ng of DNA)
- Supplied with a 5x sample loading buffer

### Applications

- Provides quantification of dsDNA on gels

### Ordering

- BILATEC MWM-2 (200 lanes) Cat.No. 120201
- BILATEC MWM-2 (500 lanes) Cat.No. 120202



## Bilatest Molecular Weight Marker-3 (MWM-3):

### Product Description

BILATEC MWM-3 contains 11 regularly-spaced bands, ranging from 500bp to 5000bp. The 1000bp and 3500bp bands have highest intensity, for easy identification and orientation. As each band contains an exact amount of dsDNA, it is possible to achieve accurate quantification of sample bands.

### Features

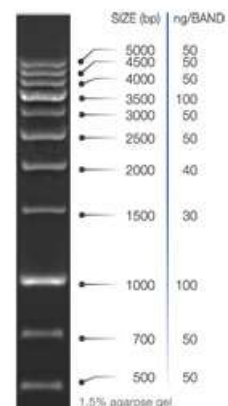
- Each band represents an exact amount of dsDNA
- Contains Red dye, migrating at 500bp in 1.5% agarose gel
- Supplied in ready-to-use form, 5µl per lane (total of 620ng of DNA)
- Supplied with a 5x sample loading buffer

### Applications

- Provides quantification of dsDNA on gels

### Ordering

- BILATEC MWM-3 (200 lanes) Cat.No. 120301
- BILATEC MWM-3 (500 lanes) Cat.No. 120302



## Bilatest Molecular Weight Marker-4 (MWM-4):

### Product Description

BILATEC MWM-4 contains 9 regularly-spaced bands, ranging from 100 to 1,000bp.

Each band is an exact multiple of 100bp. As each band contains an exact amount of dsDNA, it is possible to achieve accurate quantification of sample bands.

### Features

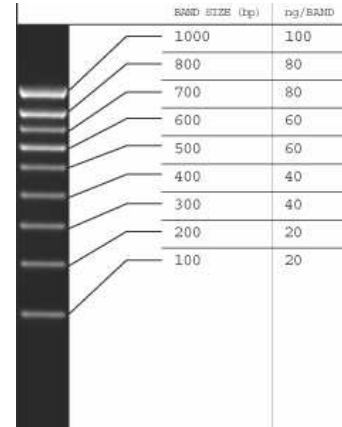
- Each band represents an exact amount of dsDNA
- Supplied in ready-to-use form, 5µl per lane (500ng of DNA)
- Supplied with a 5x sample loading buffer

### Applications

- Provides quantification of dsDNA on gels

### Ordering

- BILATEC MWM-4 (200 lanes) Cat.No. 120401
- BILATEC MWM-4 (500 lanes) Cat.No. 120402



## Bilatest Molecular Weight Marker-5 (MWM-5):

### Product Description

BILATEC MWM-5 contains 12 regularly-spaced bands, ranging from 25 to 500bp. The 100 and 200bp bands have the highest intensity, to allow easy identification. As each band contains an exact amount of dsDNA, it is possible to achieve accurate quantification of sample bands.

### Features

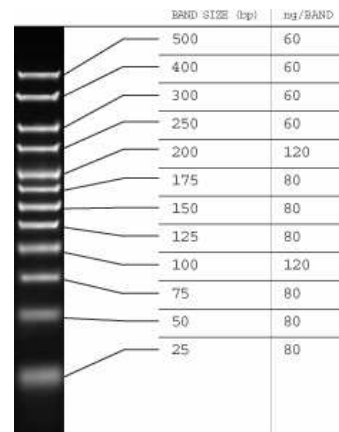
- Each band represents an exact amount of dsDNA
- Supplied in ready-to-use form, 5µl per lane (960ng of DNA)
- Supplied with a 5x sample loading buffer

### Applications

- Provides quantification of dsDNA on gels

### Ordering

- BILATEC MWM-5 (200 lanes) Cat.No. 120501
- BILATEC MWM-5 (500 lanes) Cat.No. 120502



## Bilatest Molecular Weight Marker-6 (MWM-6):

### Product Description

BILATEC MWM-6 contains 10 bands, ranging from 10,090 to 48,500bp. As each band contains an exact amount of dsDNA, it is possible to achieve accurate quantification of sample bands. Pulse Field Inversion Electrophoresis is recommended for superior resolution of fragments from 29,950bp to 48,500bp. HyperLadder VI also contains an additional corresponding band at 1.5kb.

### Features

- Each band represents an exact amount of dsDNA
- Supplied in ready-to-use form, 10µl per lane (830ng of DNA)
- Supplied with a 5x sample loading buffer

### Applications

- Provides quantification of dsDNA on gels

### Ordering

- BILATEC MWM-6 (200 lanes) Cat.No. 120601
- BILATEC MWM-6 (500 lanes) Cat.No. 120602

